



Ideally located opposite Strasbourg train station, TRIBE Strasbourg Centre Gare opens its doors in September 2026 for a new era. Beneath a spectacular glass roof flooded with natural light, the lobby and its patio set the tone from the very first moment: a hotel with contemporary design and a warm atmosphere, where every detail has been crafted for a tailored experience — and a team that will be delighted to welcome you. At the bar, take a moment for a drink or a bite between meetings. In the coworking space, work at your own pace in a carefully designed setting. Each morning, breakfast celebrates the finest local produce — the perfect way to start the day. A meeting room is also available for hire. The hotel is 100 metres from Strasbourg train station, steps away from tram and bus lines, 4 minutes from the A35 motorway and 2 minutes on foot from the Wodli public car park, with a preferential rate agreement in place. The European Parliament and the Palais des Congrès are easily accessible. Strasbourg is a city like no other. A UNESCO World Heritage listed historic centre, a soaring Gothic cathedral, winding canals and the colourful lanes of La Petite France — TRIBE places you right at the heart of it all, steps away from the Galeries Lafayette and everything that makes this city so extraordinary.

📍 14-15 Place de la Gare 67000 Strasbourg

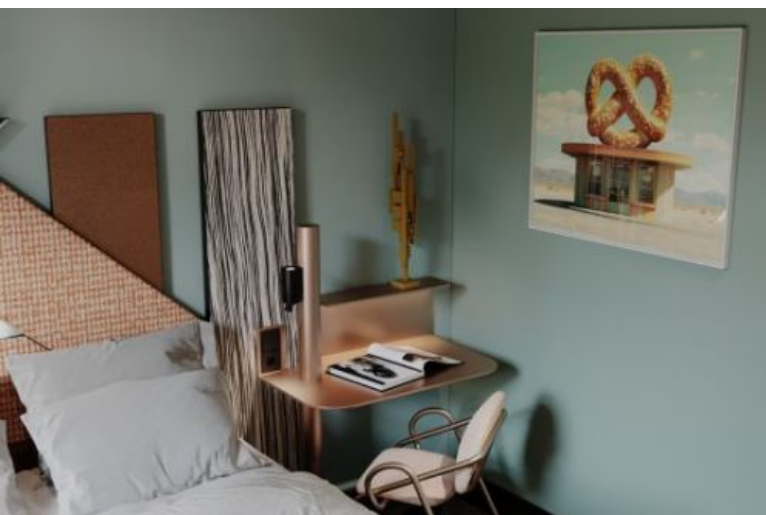
📞 0388157815

✉️ H2149@accor.com



📍 of the hotel

- At 10 minutes from the city center
- In front of the TGV station, and positioned close to the Tram and Bus stops.
- In the heart of the European Capital.
- Only a 2-minute walk from the charming "Petite France" district and just steps away from the Cathedral.
- The European Parliament and the Convention Center are within easy reach from the hotel.



68 ROOMS



31

Double (incl. Single)



33

Twins



2

Quadruple Families



2

Triple Families



Meeting rooms



On-site catering



Restaurants nearby



Accessibility for people with reduced mobility



Bar



Pets accepted



Air conditioner

OTHER SERVICES

Leisure groups accepted, Fitness, Breakfast Buffet, Welcome tray, Video surveillance, Safe, Luggage porter, Wifi

AROUND THE HOTEL

Transports :



Railway station
Strasbourg's Station **240m**

Points of interest :



La Petite France district 1.1km
Strasbourg Cathedral 1.5km
Europa Park 35.5km

View the good deals of the hotel



